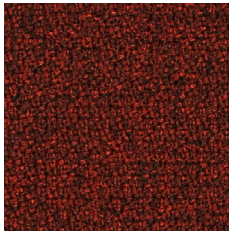
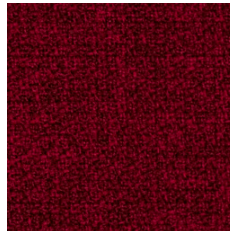


Step | Step Melange

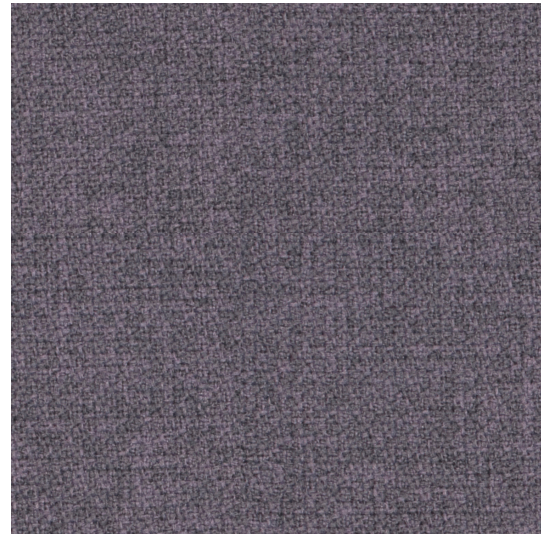
Cat. 2 | Cat.3



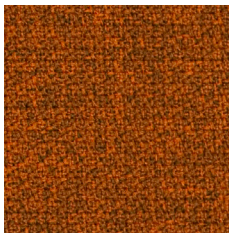
*63075 L24



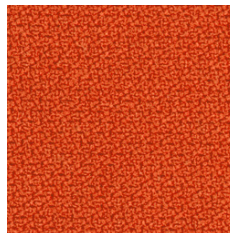
*64013 L18



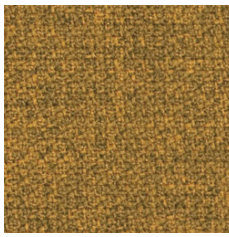
*65093 LY2



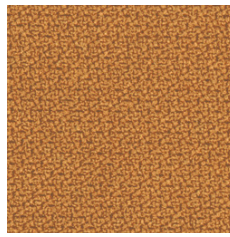
*63082 L10



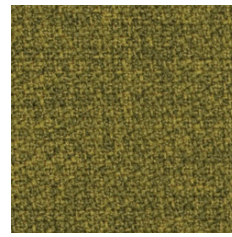
*63082 L11



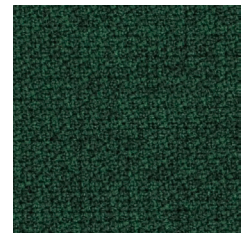
*62057 L16



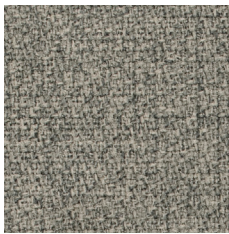
*62057 L17



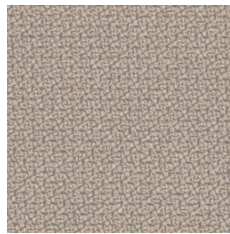
*68119 L08



*68161 L26



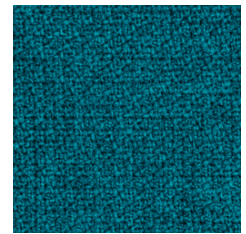
*61104 L70



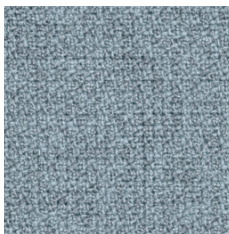
*61149 L15



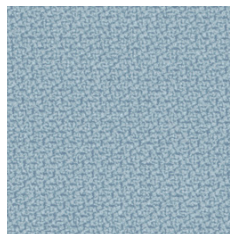
*68118 L50



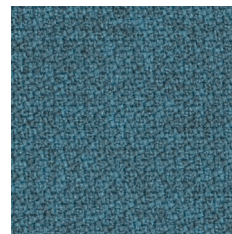
*67007 L02



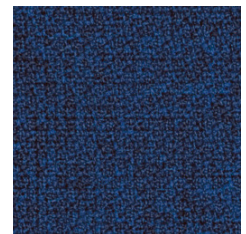
*67004 L06



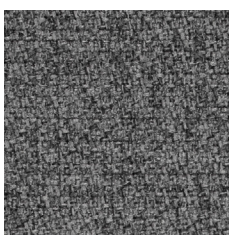
*67004 L07



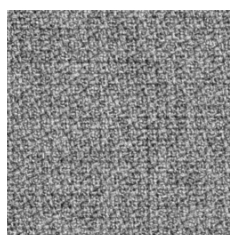
*67072 L28



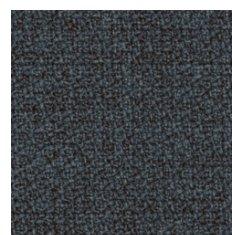
*66149 L04



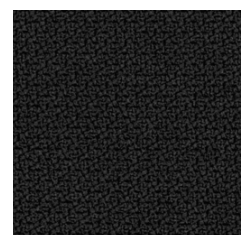
*60011 L34



*60004 L12



*66019 L20



*60999 L01

Step | Step Melange



EN

Certified to OEKO-TEX® Standard 100

Certified to the EU Ecolabel

Composition

100% Trevira CS® Flame Retardant Polyester

Weight

470 g/m²

Abrasion resistance

100.000 Martindale cycles

Flammability

BS EN 1021-1 (cigarette)
BS EN 1021-2 (match)
BS 5852: part 1
BS 5852: part 2 (Crib 5)
BS 7176 Medium Hazard
UNI 9175 & UNI 9175/FA1 Classe 1 IM
DIN 4102 B1
NFP-P-92-503-512 M1
ÖNORM B 3825-B1-3800-Q1 UK
AM 18 - NF D 60-013 (only for fabric)
CA TB 117-2013
DIN EN 13501-1 B-s1, d0

Light fastness

5-7 (EN ISO 105-B02)

Fastness to rubbing

wet: 4-5; dry: 4-5 (ISO 105-X12)

FR

Certifié conforme à la norme OEKO-TEX® 100

Certifié conforme à l'écolabel européen

Composition

100% Trevira CS® Polyester Inflammable

Poids

470 g/m²

Résistance à l'abrasion

100.000 Cycles de Martindale

Inflammabilité

BS EN 1021-1 (cigarette)
BS EN 1021-2 (allumette)
BS 5852: part 1
BS 5852: part 2 (Crib 5)
BS 7176 Medium Hazard
UNI 9175 & UNI 9175/FA1 Classe 1 IM
DIN 4102 B1
NFP-P-92-503-512 M1
ÖNORM B 3825-B1-3800-Q1 UK
AM 18 - NF D 60-013 (uniquement pour les tissus)
CA TB 117-2013
DIN EN 13501-1 B-s1, d0

Stabilité à la lumière

5-7 (EN ISO 105-B02)

Résistance au frottement

humide: 4-5; sec: 4-5 (ISO 105-X12)

DE

Zertifiziert gemäß OEKO-TEX® Standard 100

Zertifiziert nach EU Ecolabel

Zusammensetzung

100% Trevira CS® Flammhemmendes Polyester

Gewicht

470 g/m²

Abriebfestigkeit

100.000 Martindale-Zyklen

Entflammbarkeit

BS EN 1021-1 (Zigarette)
BS EN 1021-2 (Streichholz)
BS 5852: part 1
BS 5852: part 2 (Crib 5)
BS 7176 Medium Hazard
UNI 9175 & UNI 9175/FA1 Classe 1 IM
DIN 4102 B1
NFP-P-92-503-512 M1
ÖNORM B 3825-B1-3800-Q1 UK
AM 18 - NF D 60-013 (nur für Stoff)
CA TB 117-2013
DIN EN 13501-1 B-s1, d0

Lichtgeschwindigkeit

5-7 (EN ISO 105-B02)

Reibechtheit

nass: 4-5; trocken: 4-5 (ISO 105-X12)

!

Cat. 2 applies to seating category products and Cat. 3 applies to screens and panels.

!

Batch to batch variations in shade may occur within commercial tolerances.

!

La cat. 2 s'applique aux produits de la catégorie sièges et la cat. 3 s'applique aux écrans et aux panneaux.

!

Des variations de teinte d'un lot à l'autre peuvent se produire dans le cadre des tolérances commerciales.

!

Kat. 2 gilt für Produkte der Kategorie Sitzmöbel und Kat. 3 gilt für Trennwände und Platten.

!

Innerhalb der handelsüblichen Toleranzen können Farbabweichungen von Charge zu Charge auftreten.